

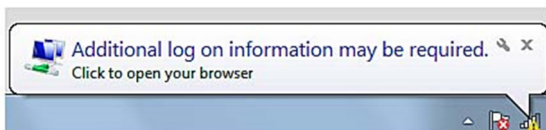
## Connecting a device to SHSC-Public

On the list of available wireless networks click on 'SHSC-Public'

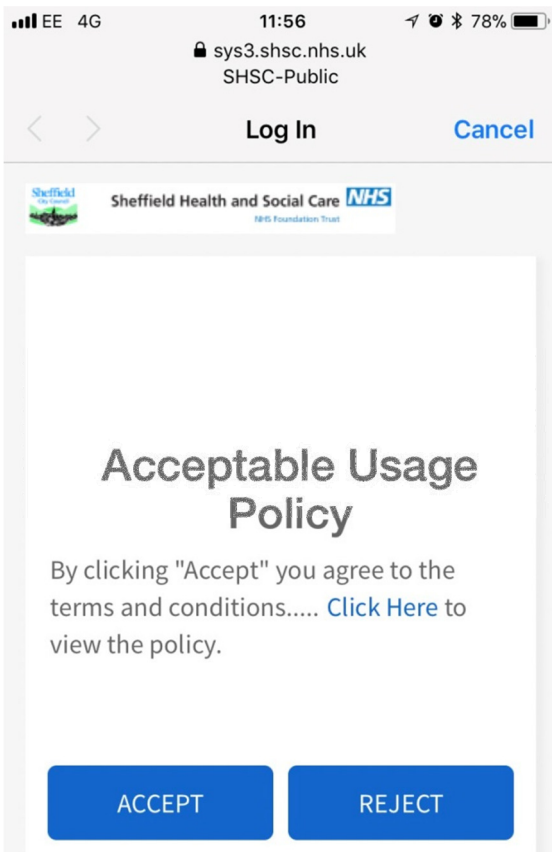
SHSC-Public



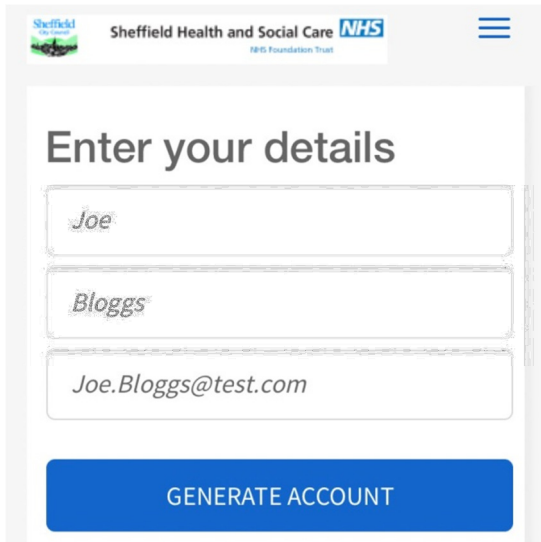
If the device is an iPhone or Android device, you will automatically be forwarded to the logon page. If connecting via a Windows or a different device you will be prompted with an 'Additional log on information may be required' pop up.



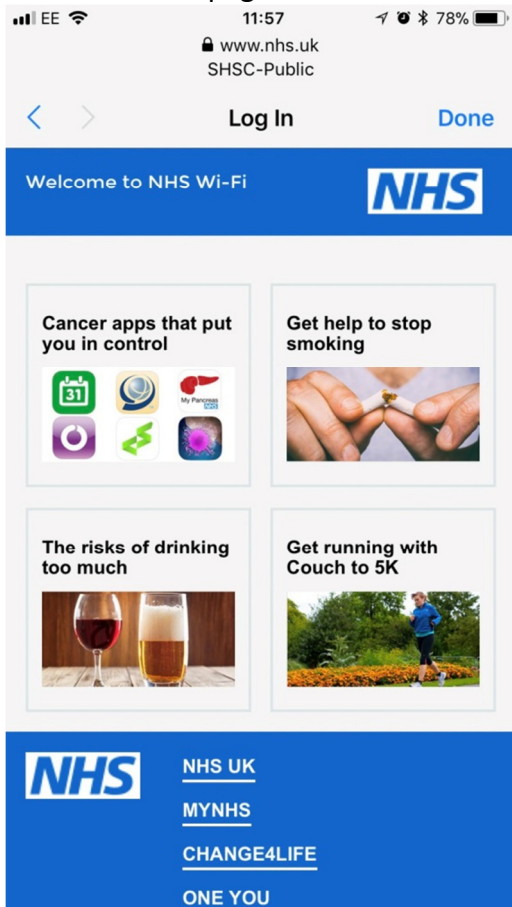
Press 'Accept' the Guest WiFi Terms & Conditions to proceed. If you press 'Click Here' the Terms & Conditions can be viewed.



Enter the self-service details requested.



When connection has been successful you will automatically be directed to the NHS Digital Post-Authentication page.



Filtered Wireless Internet Access is now available.