

Council of Governors  
16<sup>th</sup> December 2014  
Item 7

# Reconfiguration Update

December 2014

## Background

- Acute Care Reconfiguration business case Feb 2012
- Progress has been made in a range of areas
- Plan to review the capacity elements of the business case with current data to help shape future service
- Plan to have strategy document available and to Trust Board in January 2015



## Vision

- High Quality Service
- Services based upon need (not age) – across the age range for all pathways
- ‘Recovery’ orientated services
- Closer working with third sector (crisis houses; supported accommodation etc)
- Care & Treatment delivered as close to the community as possible
- Ensure “supported accommodation” for all people who need it

3



## Rationale for change

- Over occupancy on adult acute wards.
- Service users accessing acute care outside of Sheffield.
- Lack of community based alternatives to acute hospital care – more appropriate, better value.
- Inequity in the pathway dependent on age
- Long lengths of stay and delayed discharges.
- Better use of resources - £3 million out of town on acute care and locked rehab.
- Some areas of inpatient estate not fit to provide high quality services

4



## Progress to date

- Implemented crisis house
- Commissioned 10 bedded Psychiatric Intensive Care Unit
- Pathway work in various forms
- Reduction from 44 to 24 Functional Mental Illness (FMI) beds
- Effective structures and management across directorates with plans to progress work jointly

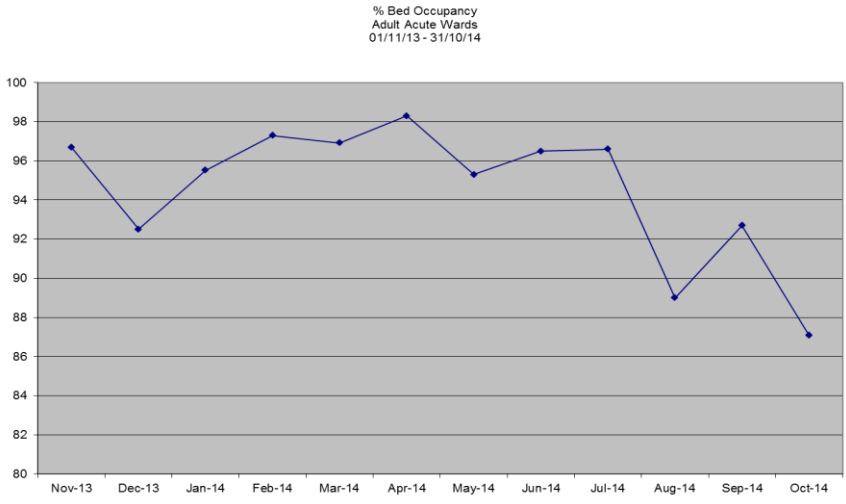
5



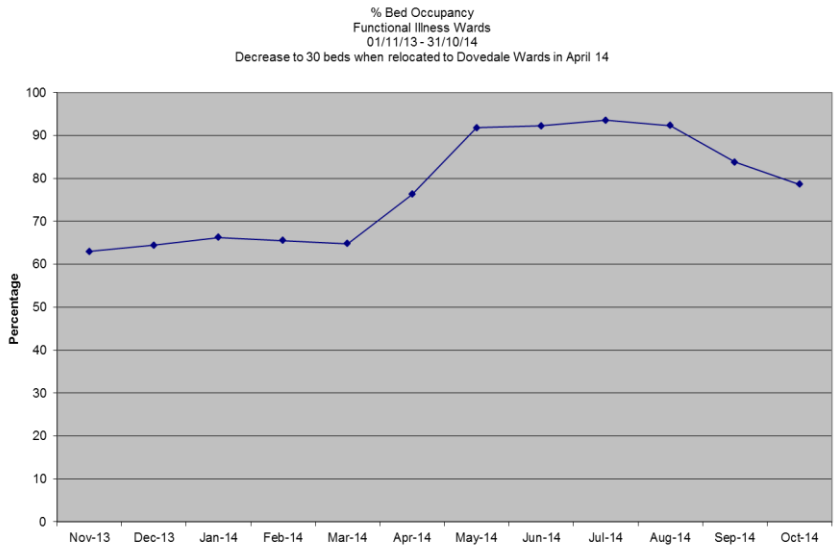
## Current provision

- 90 Adult Mental Health sector beds (4 mothballed)
- 5 substance misuse dettox beds
- One 136 bed
- 24 Dovedale / Functional Mental Illness beds
- 8 Psychiatric Intensive Care Unit beds
- 6 crisis house beds

6



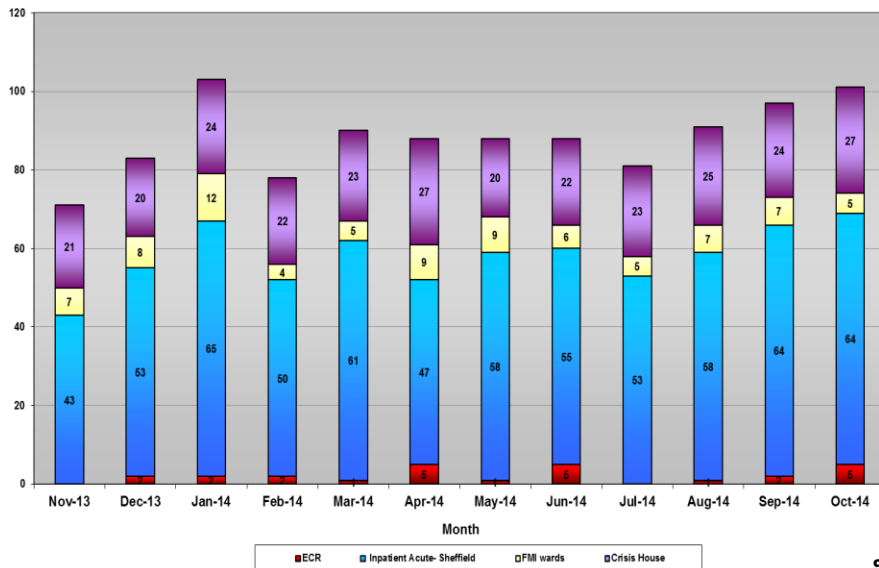
7



8



Total number of admissions over the last 12 months



9



## Beds of care

	2011/12	2012/13	2013/14	Q1 2014	Q2 2014
Total beds of care/ occupancy for whole age range acute in and out of city (Excluding substance misuse and ITS)	141.8	127.8	116.1	115.7	114.2

10



## Capacity work

- Plan to review all admission in the past 3 months  
Aug – Oct 2014 inclusive
- Reviewing short admissions over the past year  
to identify if crisis house should have avoided  
admission
- Review of inpatient bed use by people with  
personality disorder
- Plan to model future demand

11



## Shaping the new service

- Recovery care planning
- Bed numbers
- Skill mix
- Pathway
- Planning environmental requirements
- Consider additional alternatives to admission
- Links to rehab strategy

12



## Rehab Strategy Background

- Rehab strategy 2013 has been progressed
- Currently planning new service model
- Need to update strategy to develop shared view and then seek approval to progress

13



## Vision

- High Quality Service
- Being able to provide care and treatment for all Sheffield service users in town
- Services based upon need (not age) – across the age range for all pathways
- ‘Recovery’ orientated services
- Closer working with third sector (crisis houses; supported accommodation etc)
- Care & Treatment delivered as close to the community as possible
- Ensure “supported accommodation” for all people who need it

14



## Progress to date

- Community Enhancing Recovery Team phase 1 pilot started
- Effective partnership with South Yorkshire Housing Association
- Service users being returned from out of town
- Process agreed to review 100 rehab service users who are in and out of Sheffield

15



## Capacity work

- Review of all service users out of town in locked rehab
- Review of service users on Pinecroft
- Review of service users on Forest Close
- Information from review of acute admissions to get up to date figure for rehab service users in acute beds

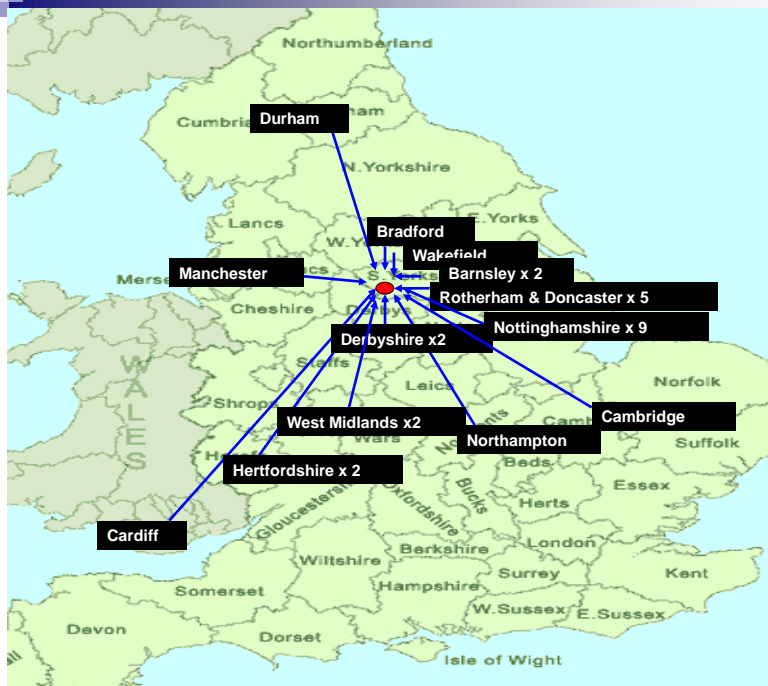
16





## Current location of service users in locked rehab throughout the UK

17

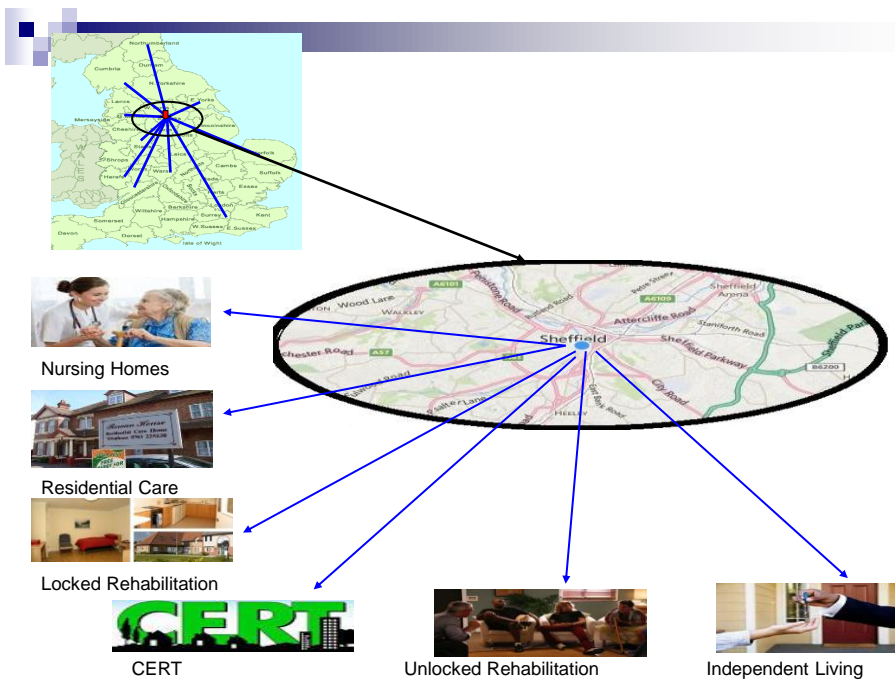


18



- How we can develop a system to have all service users cared for in Sheffield -

19



20



## Shaping the new service

- Bed numbers – locked and unlocked
- Skill mix
- Pathway
- Expansion of Community Enhancing Recovery Team
- Partnerships
- Residential care
- Nursing care
- Housing