



Sheffield Health and Social Care **NHS**

NHS Foundation Trust

Council of Governors
4th February 2014
Item 5

Community Mental Health Team Reconfiguration Review

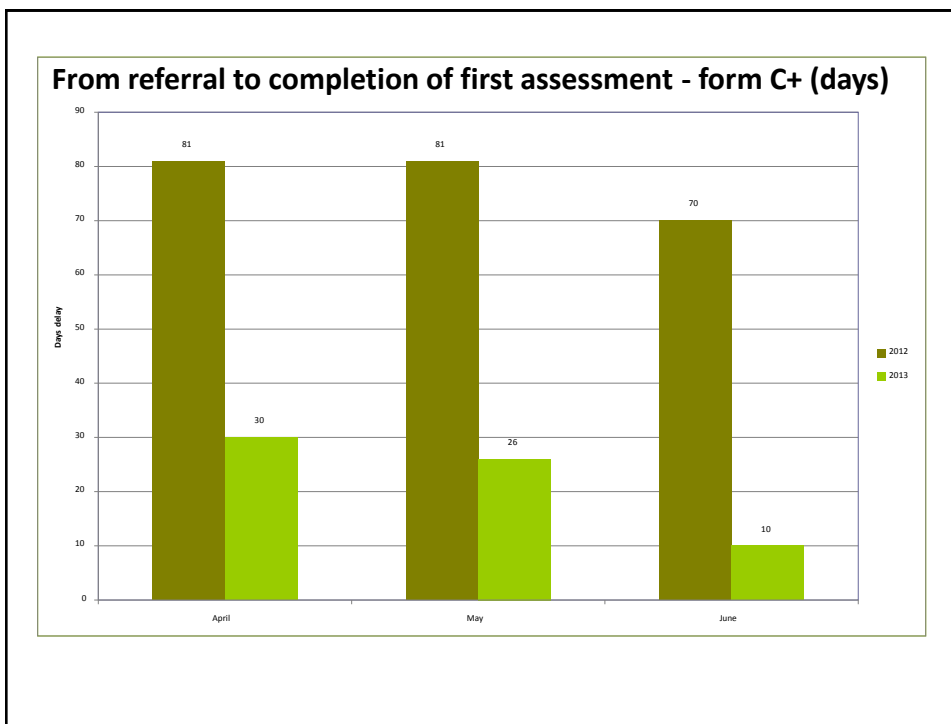
Dr Katy Kendal
Clinical Director

4th February 2014



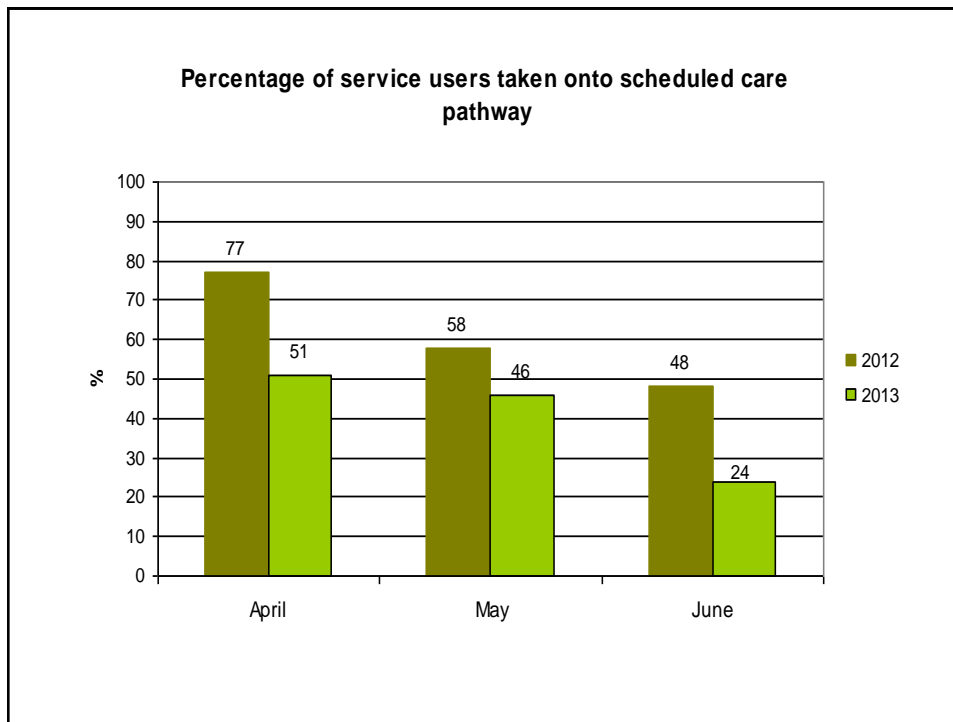
CMHT reconfiguration

- Complex service redesign
- Affected 300+ staff
- Service delivered to 3000+ service users
- July 2012 home treatment to locality bases
- Sept 2012 onwards access and recovery



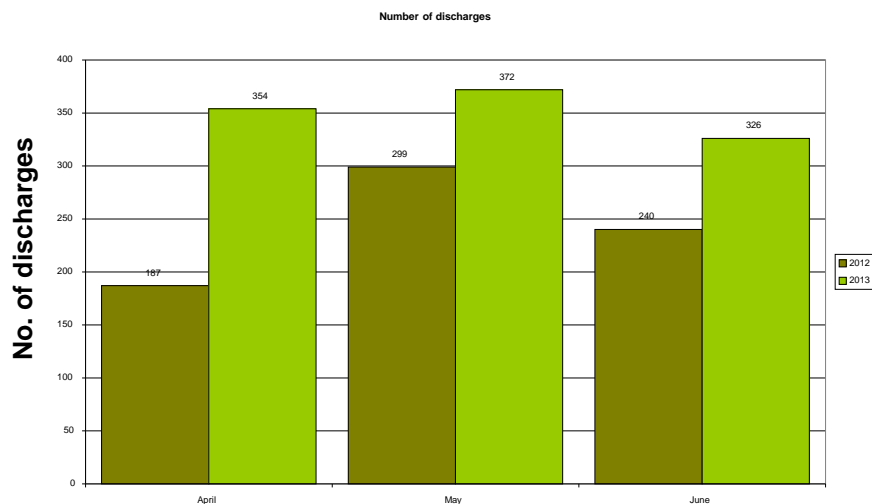
Trend of days to assessment is down

	Number of referrals	% to initial assessment	Average days referral to assessment
N	975	42%	48
SE	1326	37%	43
SW	1093	41%	51
W	802	46%	31

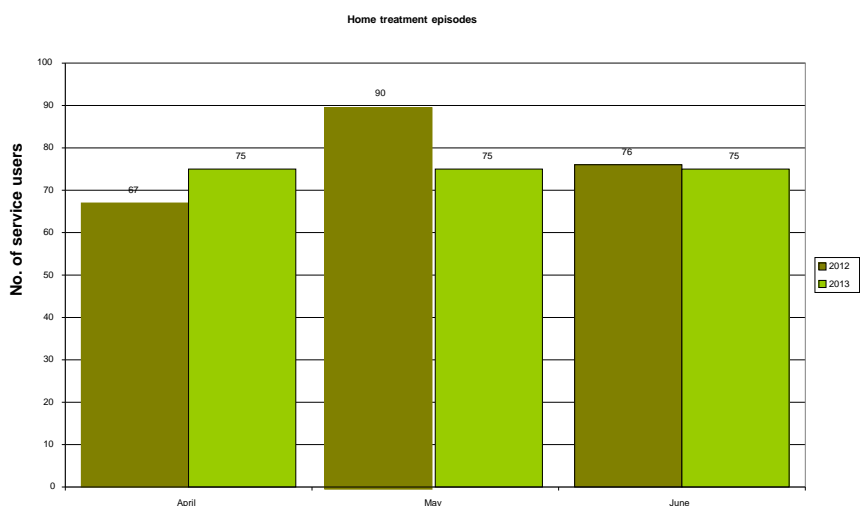


- 4-8 % from access to recovery, but many others from wards and transfers
- Increasing numbers from short term care to recovery

Majority of discharges from access/assessment including short term care

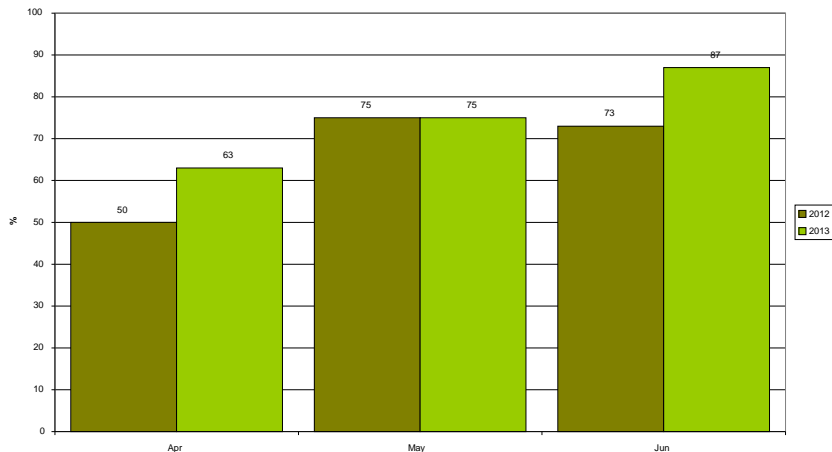


Roughly the same

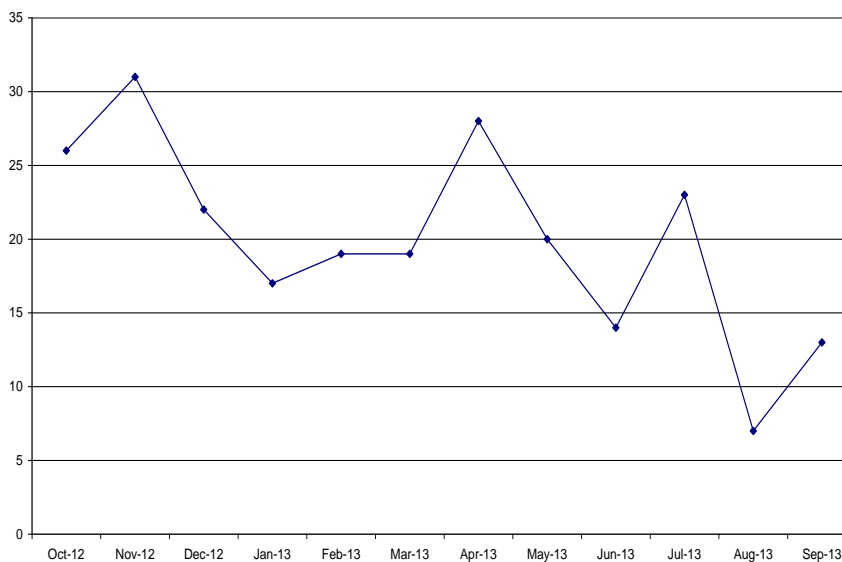


People clearly accessing services 24hrs but capacity limited

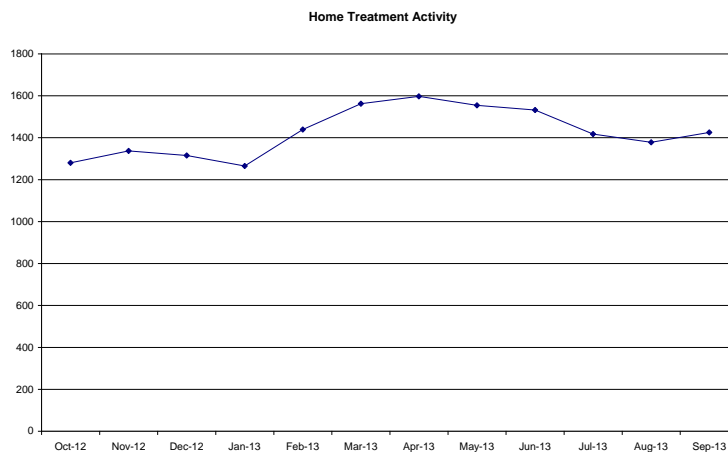
Service users (already known to CMHTs) presenting out of hours in a crisis shown as a percentage of total number of service users presenting out of hours



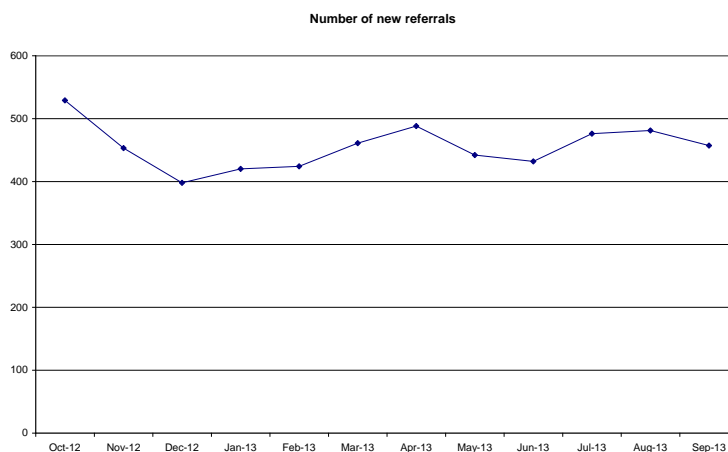
Number of initial assessments leading to Scheduled Care Pathway (Recovery)



More activity in same number of episodes means working more intensively

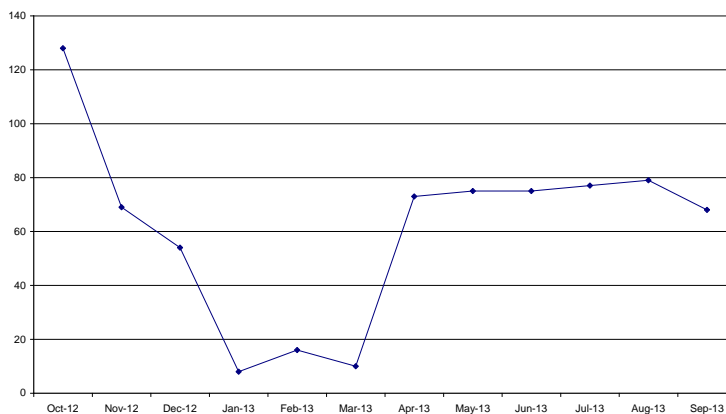


But number of referrals increasing from 4,200/year to 5,500/year



Referral rate now back up but caseload dropping

Number of new potential EIS cases

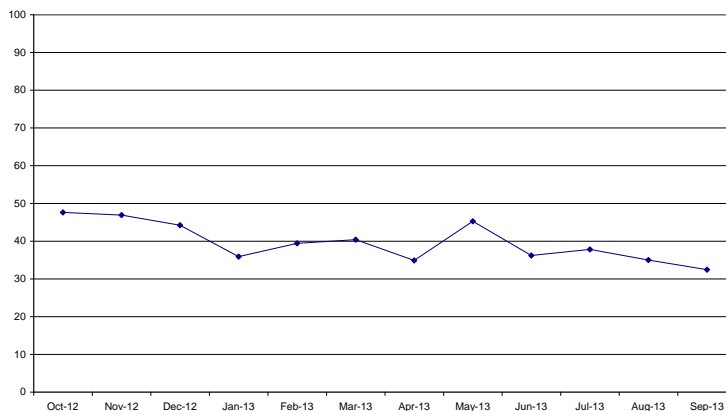


EIS – Early Intervention Service

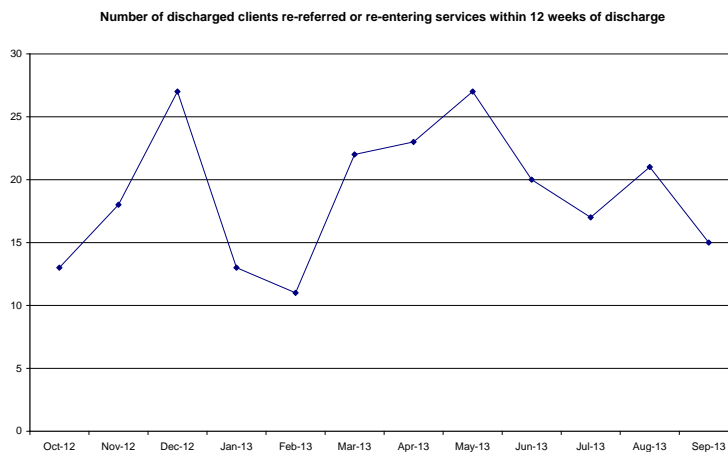
Percentage varies:

N 42 SE 35
SW 33 W 56

Percentage of initial assessments signposted and supported with advice to GP



**Raw number is 194 of 4,470 referrals
(can't do it as percentage of discharges – yet)**



- Formal complaints and Serious Untoward Incidents downward trend (roughly halved but small numbers)

Targets

- Numbers seen in 2 weeks increasing and met (26%)
- Scheduled Care Pathway >1yr with DRAM met (56% up to 76%)
- Scheduled Care Pathway with care plan in 6 weeks met (60% up to 75%)
- Care Programme Approach in 12 months better – still not good enough

Money

- Had to save £1,106,000 (10% of budget)
- Pretty much there – overspend mainly due to locum costs for sickness cover